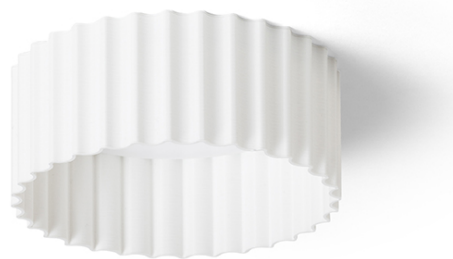


NEW

MARENGA RT1 40



LED 6W 570 lm Ra 80

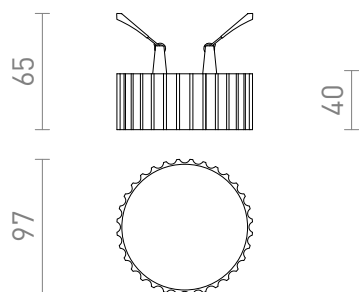
A recessed LED lamp for a drywall ceilings with a low recessed depth and a decorative shade. The shade is created by 3D printing. Made of eco-friendly PLA material, which is fully degradable. The size of the mounting hole can be adjusted using the sliding fixing springs. The lamp can conveniently replace existing halogen lamps without the need for modification of the old holes.

RP EUR incl. VAT

R14012

MARENGA RT1 40 recessed white Eco PLA
230V LED 6W 3000K

68,00



3D model



PDF manual

